

# ON TRACK TO CURB VANDALISM IN THE WESTERN CAPE



Over the past few months, Metrorail Western Cape Region has experienced an alarming rate of vandalism with the sole aim to paralyse the Metrorail system.

This has prompted PRASA to intensify security and consider working in partnership with the Western Cape SAPS in order to stamp out the criminal activities on our rail system.

## **A reward of up to R25 000 may be paid for information leading to the arrest and conviction of criminals**

Transport Information Centre 0800 65 64 63 ( all hours ) Toll Free

Metrorail Corporate Security 0800 21 00 81 ( all hours ) Toll Free

SAPS Crime Stop 0860 01 01 11

Rail Police

<u>Area</u>	<u>Station</u>	<u>Number</u>
IKAPA	CAPE TOWN (Platform 1)	021 443 4327
NORTH	Bellville	021 941 6800
CENTRAL	Phillipi (Stock Road)	021 374 0622
SOUTH	Retreat	021 710 5129
RADIO CONTROL		021 449 5111

# VANDALISM TO METRORAIL PROPERTY



Signals removed (Belhar)



Cables ripped out and interior damaged



Stakeholders visit a depot to inspect damages to trains



Signal box opened and electrical wiring damaged and removed



Fences surrounding stations are damaged



Metrorail coaches where seats have been removed



Fences damaged



Fences removed



Signal points damaged



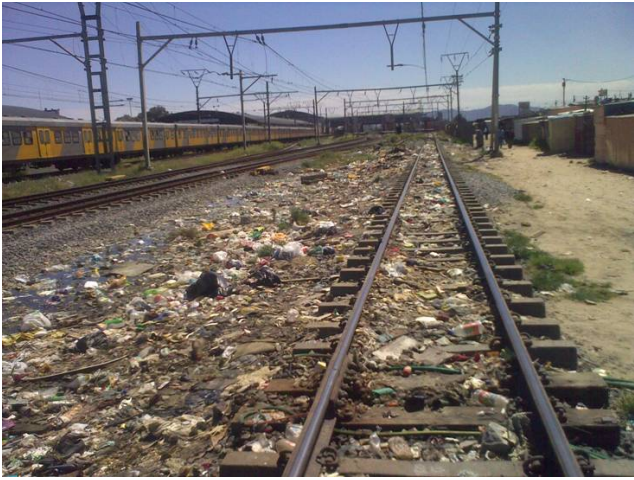
Signal points deliberately damaged



Rail track damaged



Rail track clips damaged



Refuse being dumped on or near rail tracks



Windows being removed from coaches

## METRORAIL PROPERTY NEWLY REPAIRED OR REPLACED



Cables being replaced



Brand new rail clips



Composite windows replaced



Exterior refurbished carriage in depot



Interior of coaches being refurbished



Fences are being repaired



Fences are being replaced



Signals and electronic equipment are being replaced



Coaches are being reconstructed and refurbished



Temporary windows are fixed as an interim solution

# OVERCROWDING IS A GLOBAL PROBLEM NOT ONLY A METRORAIL PROBLEM



A day in the life of Indian commuters



Sao Paolo Brazil rush hour



Tokyo commuter rush



Crush capacity Tokyo